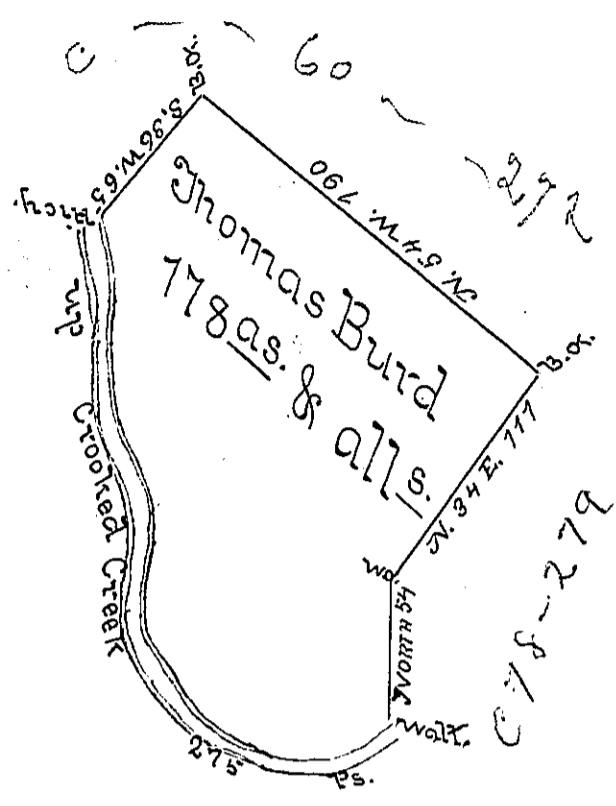


Courses & Distances up
The Creek

S. 70 E. 59	78
S. 76 E. 69	
S. 7 E. 70	
S. 48 E. 38	
N. 64 E. 36	
N. 19 E. 8	
<hr/>	
	275 PS.



The above is a draft of a tract of Land Survey'd to Thomas Burd on the 10th day of May 1773 in pursuance of an Order bearing date the 3^d of April 1769 n^o. 1371 By Joshua Elder a former D.S. Containing One Hundred & Seventy Eight Acres & Alls. of Six P. Ct. &c. Situate on the North Side of Crooked Creek in the County of Armstrong taken from his Draft now in my possession Which I have examined & find Correct Certified this 1st day of Feb^r: 1802

Geo. Ross D.S.

To Saml. Cochran Esq^r.
 Survr^r: Generl^r: of Penns^a. }

That this tract is Seized By a M^r: George Beeck Who Claims the Same by Improvement

IN TESTIMONY that the above is a copy of the original remaining on file in the Department of Internal Affairs of Pennsylvania, made conformably to an Act of Assembly approved the 16th day of February, 1833. I have hereunto set my Hand and caused the Seal of said Department to be affixed at Harrisburg, this

first day of September 1896

James W. Little
 Secretary of Internal Affairs.